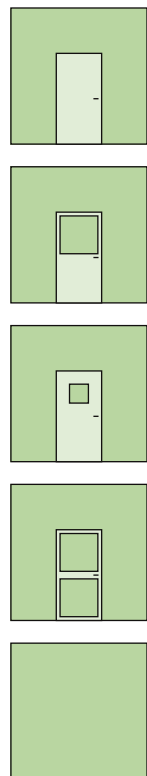


## Technical Information



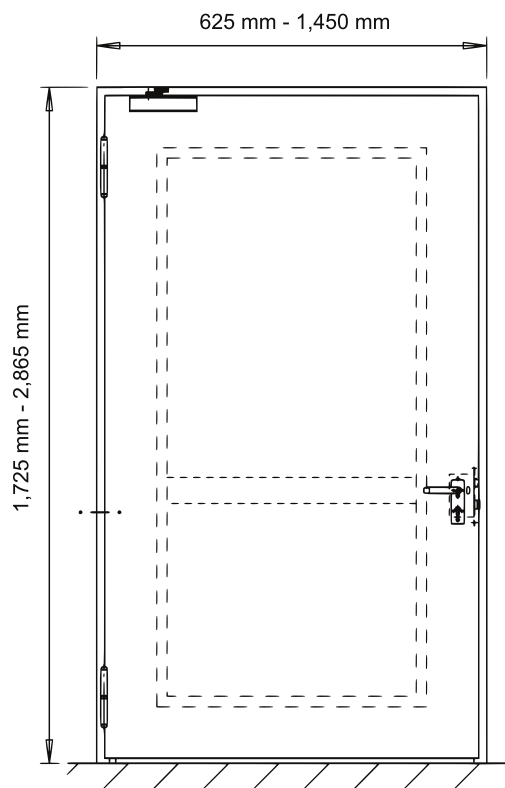
### System Schröders EIS-1

#### Single-leaf steel fire door EI<sub>2</sub> 60 / E 120 / EW 60 (120) (Sa/Sm)

- according to EN 1634-1  
EN 1634-3  
EN 13501-2
- optional stainless steel
- optional with glazing
- optional in combination with **smoke control**  
according to EN 1634-3
- optional in combination with **air tightness**  
according to EN 12207  
up to class 4

## Fire Door "System Schröders EIS-1"

- **Fire resistance** EI<sub>2</sub> 60 / E 120 / EW 60 (120 tested)  
tested in accordance with EN 1634-1  
  
Classification report WFRC 302467 according to EN 13501-2
- **optional performance characteristics**
  - **Smoke control** S<sub>a</sub>/S<sub>200</sub> tested according to EN 1634-3
  - **Air tightness** according to EN 12207, up to class 4
  - **Resistance to wind load** according to EN 12210, up to class C5
  - **Watertightness** according to EN 12208, class 8A
  - **Resistance to positive and negative pressure** to 5,000 Pa

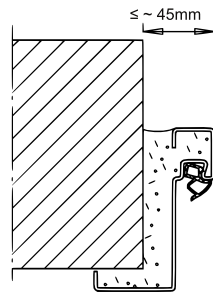




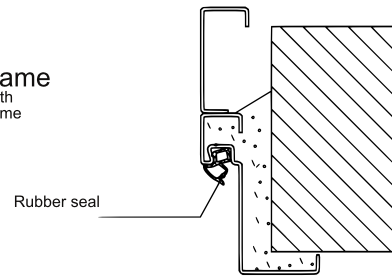
## Installation Variants

### Installation in

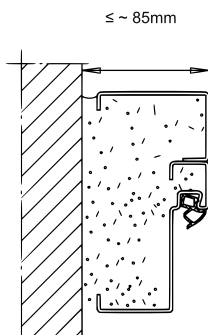
Masonry /  
concrete



Corner frame  
Corner with  
counter frame

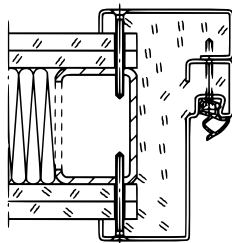


Masonry /  
concrete

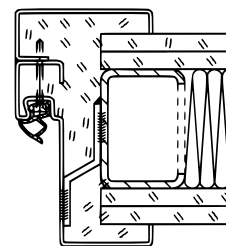


Block frame  
Corner with  
counter frame

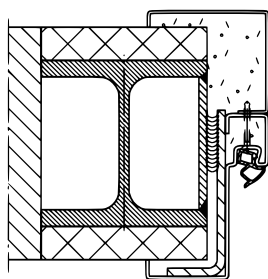
Flexible wall



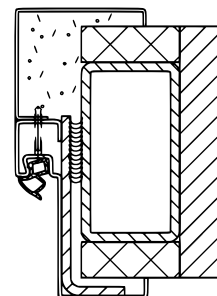
Wrap-around frame  
Corner with  
counter frame



Covered  
steel columns /  
steel beams



Wrap-around frame  
Corner with  
counter frame



**System Schröders**<sup>®</sup>  
Innovation Tür und Tor

[www.system-schroeders.de](http://www.system-schroeders.de)